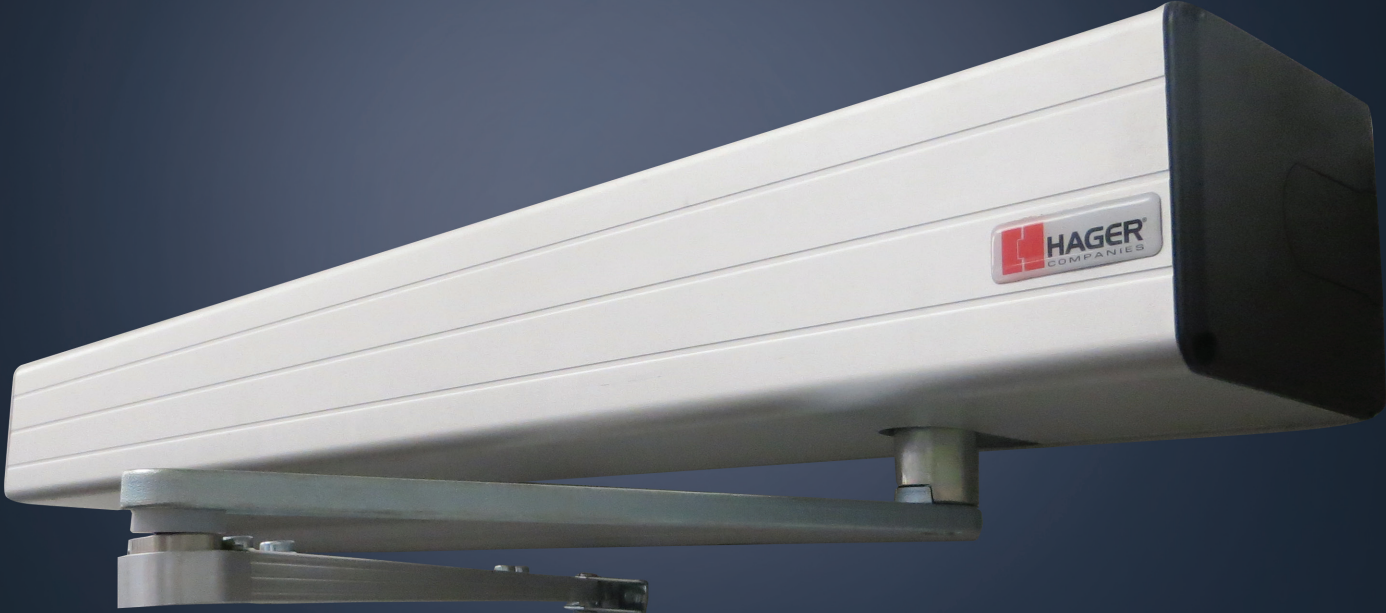


8400 Series
Low Energy Power Operator



8400 Series Low Energy Power Operator



Headliners:

- Ideal for manual openings that occasionally require an automatic opening
- Push or pull side mounting
- Quiet operation eliminates noise in sensitive areas
- Activated manually via wall switches or radio frequency devices

Features:

- Single person installation
- Pre-drilled mounting holes for ease of installation
- Built-in adjustable door stop for protection against wind or abusive environments
- Interfaces with electric door hardware
- Operates as a mechanical closer if power is disconnected
- Obstacle recognition upon opening and closing
- Onboard power supply
- Blow open function for smoke ventilation
- Boost on close - selectable on/off

Applications:

Libraries
Retail Buildings
Medical Buildings
Schools and Universities
Assisted Living Facilities

Models:

- 8418 Single Operator. (Handed)
8419 Simultaneous Pair - 2 units, 1 controller - doors operate at the same time.
8420 Independent Pair - 2 units, 2 controllers - doors operate independently from each other.
8421 Double Egress Simultaneous Pair - 2 units, 1 controller - doors swing in opposite direction at same time.
8422 Double Egress Independent Pair - 2 units, 2 controllers - doors swing in opposite direction at different times.
8423 Single Operator paired with 5100 Series Mechanical Closer for inactive door. (Handed)

Note: * **Must specify push or pull side mount for all operators except double egress applications.**
* **Specify handing when ordering the 8418 and 8423.**

Specifications

Electrical:

Power requirements:	115 VAC 60 HZ
Current draw:	3.0A
Auxiliary output voltage:	24 VDC 500mA
Fuse type:	2.0A, 5 x 20mm, Slo-Blo
Electric lock relay type:	Form "C" SPDT
Lock relay rating:	5.0A @ 28 VDC

Dimensions:

Size:	5"h x 4-1/2"d x Door Opening Width + 3"
Reveal:	Up to 12" standard
Max door weight:	350 lbs
Standard door sizes:	Single: 36" - 48" Double: 60" - 96"

Parameters:

Hold open time:	1 sec to continuous
Built-in-stop:	Manual swing to 180 degrees Power swing to 100 degrees
Fire alarm input:	FA input shunts swing activations until FACP is manually reset
Internal display:	LCD
Battery backup size:	Min 1500VA
Memory type:	Flash upgradeable
Adjustable swing degree:	80 degrees to 180 degrees

Certifications:

ANSI:	Meets A156.19
Warranty:	2 years
UL/cUL:	Listed for up to 3 hours
UL10C:	Positive pressure rated

Finishes:

ALM:	Aluminum
DBZ:	Dark Bronze

Actuators, Transmitters and Accessories

Actuator Features:

- Hard wired and wireless (Hard wired standard)
- Beveled edges
- Graphics embossed onto the faceplate for durability
- 304 grade stainless steel finish - scratch resistant



6" Square Actuator

- 2-659-0169 Push to Open text and logo
- 2-659-0170 Handicap logo only
- 2-659-0171 Surface Mount Box



4.5" Square Actuator

- 2-659-0172 Push to Open text and logo
- 2-659-0173 Handicap logo only
- 2-659-0174 Surface Mount Box



6" Round Actuator

- 2-659-0161 Push to Open text and logo
- 2-659-0162 Handicap logo only
- 2-659-0163 Surface Mount Box
- 2-659-0164 Weather Ring



4.5" Round Actuator

- 2-659-0165 Push to Open text and logo
- 2-659-0166 Handicap logo only
- 2-659-0167 Surface Mount Box
- 2-659-0168 Weather Ring



1.5" x 4.75" Jamb Actuator

- 2-659-0175 Push to Open text and logo
- 2-659-0176 Handicap logo only
- 2-659-0177 Surface Mount Box



Bollard Posts

- 2-659-0180 Black Powder Coat
- 2-659-0181 Bronze Powder Coat
- 2-659-0182 Silver Powder Coat



36" Low Profile Actuator

- 2-659-0178 Push to Open text and logo - Wireless
- 2-659-0179 Push to Open text and logo - Hard wired



4.75" Vestibule Actuator

- 2-659-0242 Push to Open text and logo
- 2-659-0243 Surface Mount Box

Transmitter Features:

- Transmitters can be programmed to multiple receivers
- Optional delay - no delay programming
- Toggle or pulse mode selectable by DIP switch
- Red LED on receiver verifies transmission and delivers troubleshooting assistance
- Red LED on transmitter ensures transmission and battery life



2-659-0184
3-Volt Hard Wired,
One Button Transmitter



2-659-0185
9-Volt Hard Wired,
One Button Transmitter



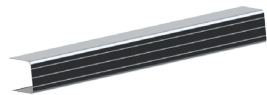
2-659-0186
Wireless, One Button
Transmitter



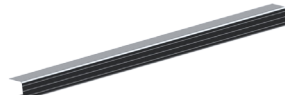
2-659-0240
Programmable Relay
and Door Sequencer



2-659-0183
433MHz Receiver



2-659-0232 | 2-659-0233
Cover for Single Operator



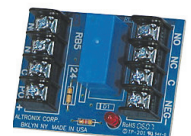
2-659-0234 | 2-659-0235
Cover for Dual Operators



2-659-0230 | 2-659-0231
Drop Plate



2-659-0236
Power Supply



2-659-0237
Relay Board

Note: For additional resources, please visit www.hagerco.com.



Hager Companies Corporate Office
139 Victor Street
St. Louis, MO 63104
314.772.4400 • 800.325.9995
www.hagerco.com

06-03-2014
5-500-3330